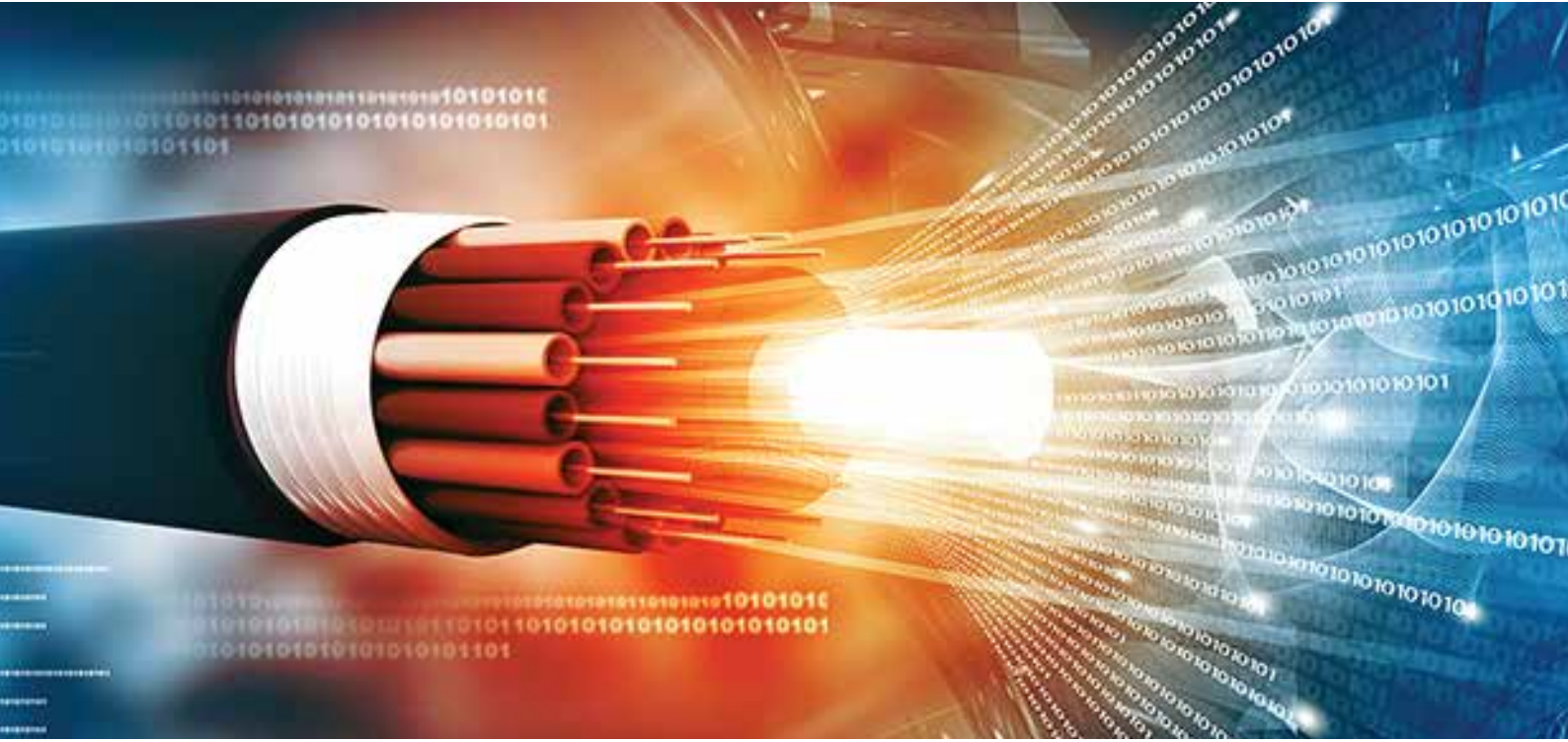


PRODUCT CATALOGUE



Networking, Power Solutions and Active Products



Copper System

We offer a wide range of cables, including U/UTP, F/UTP, U/FTP, F/FTP, SF/UTP, and S/FTP cables. These cables are available in CAT6, CAT6A, CAT7, and CAT8.1 options. At CABCOMM Systems, our cables are made of solid copper and are either shielded or unshielded twisted pair. We guarantee their performance and ensure they meet the highest safety and quality standards.



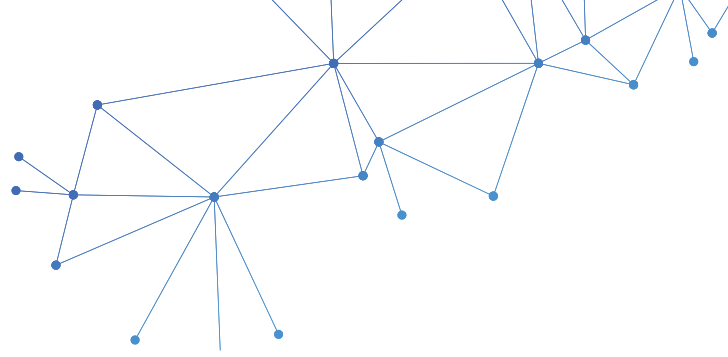
Fiber System

Our Fiber Optic cables, available in single mode and multimode fiber with various constructions such as loose tube, distribution, flexitube, armored and SWA. Our cables are designed to meet the highest standards of performance and reliability, ensuring our customers get a dependable solution every time. We take great pride in our ability to provide a wide selection of cables.



Data Center & Cabinets

Our CABCOMM Network Cabinets is designed to provide the perfect solution for your network and datacenter needs. Our cabinets are built with high quality materials to ensure superior protection and organization of your network and datacenter equipment. We offer a variety of sizes to choose from, so you can be sure to find the perfect cabinet for your application.



CABCOMM Systems, a division of Silkroad Trading Company, is a leading global provider with a wide network of Authorized Distributors worldwide. Our dedicated distributors are committed to assisting you in finding the specific products you need. With advanced engineering and manufacturing facilities in China, UAE, and India, we have the capability to efficiently meet our customers' urgent demands at competitive prices. Our top priority is delivering superior quality products and services to our valued customers, and all our factories and suppliers are certified, offering warranties on their products.

We prioritize building strong relationships and fostering close collaboration with our primary suppliers. This allows us to maintain a fast, high-quality, and cost-effective supply chain. To ensure this, it is essential that our factories and suppliers meet the minimum requirement of being ISO certified. Additionally, we provide a comprehensive 25-year warranty through our network of Approved Installers

Copper System

Our cutting-edge copper system is designed to enhance structural connectivity and enhance performance with our seamless solutions.

Fiber System

Our cutting-edge fiber system is designed to enhance structural connectivity and enhance performance with our seamless solutions.

Data Center & Networking Cabinets

Our cutting-edge Data center and networking cabinets are designed to enhance to accommodate IT and power equipment.

Our entire range of products has been developed by our research & development and engineering team to surpass the latest technologies and standards. If you desire top-notch Structural Cabling products from a company dedicated to exceptional service and quality, reach out to us.

ENTERPRISE QUALIFICATION

CABCOMM is a national high-tech enterprise and has gotten a lot of patents. CABCOMM products have obtained many certificates, such as ISO quality management system, CE, ROHS, load-bearing, and seismic resistance etc.

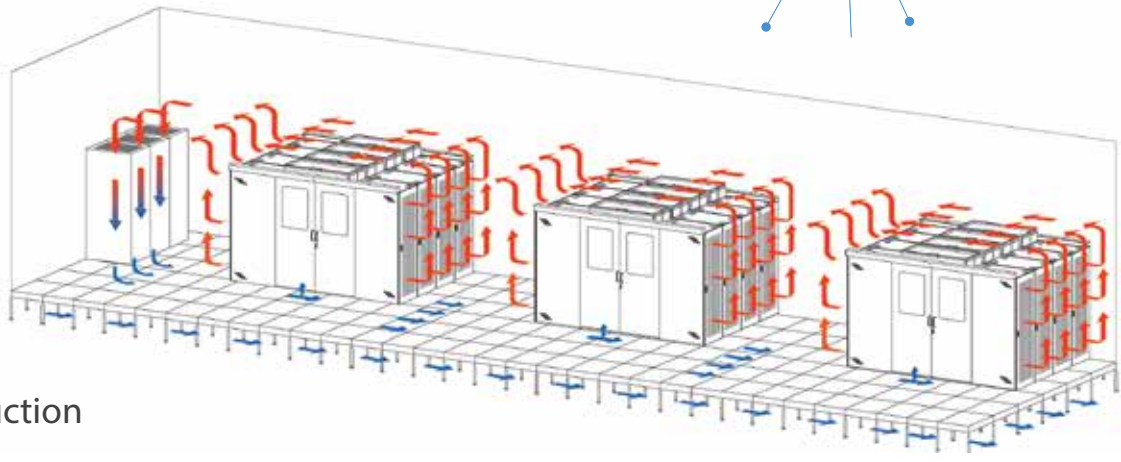
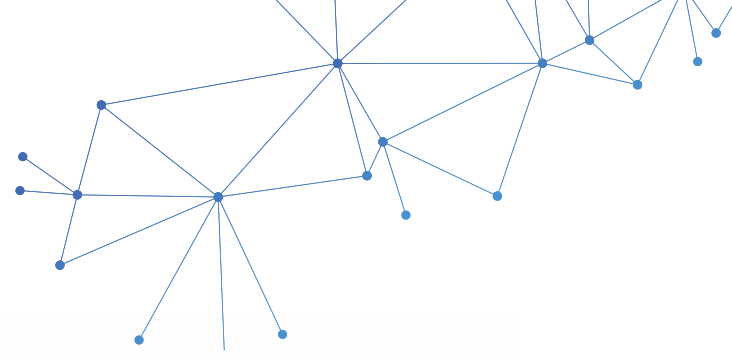


DATA CENTER Cold Aisle Containment System



Introduction

Aisle Containment Solutions by Cabcomm use a total design approach that optimizes cooling efficiencies for data centers of all sizes and needs. Reaching the full potential of these efficiencies requires a comprehensive strategy that integrates airflow containment with the facility and related infrastructure. Rather than leave these variables to chance, Cabcomm recommends that customers maximize their performance with Cabcomm Aisle Containment Services, an invaluable partner during any aisle containment installation.



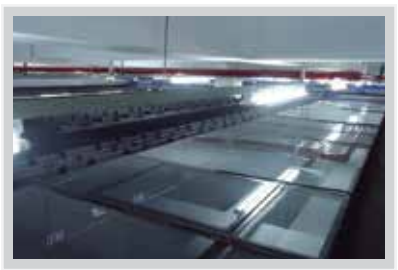
Introduction

Aisle Containment Solutions by Cabcomm use a total design approach that optimizes cooling efficiencies for data centers of all sizes and needs. Reaching the full potential of these efficiencies requires a comprehensive strategy that integrates airflow containment with the facility and related infrastructure. Rather than leave these variables to chance, Cabcomm recommends that customers maximize their performance with Cabcomm Aisle Containment Services, an invaluable partner during any aisle containment installation.

DETAILS



Smoke Alarm



Auto Fire Window



Top Cable Tray



Standard Entrance



Sliding or Auto Doors

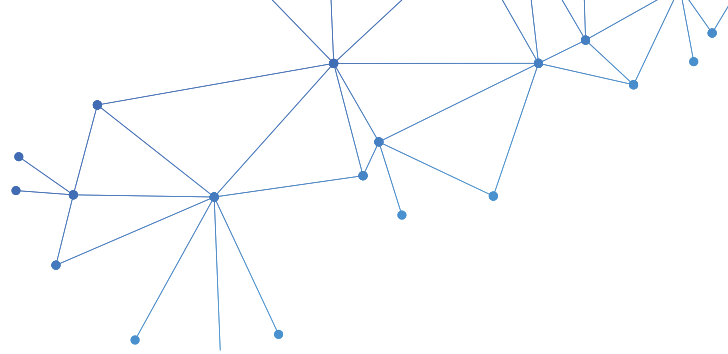


Custom System

General Features

- Safe reliable and economical options
- Saving the space of server room and energy.
- There is no need to build a specialized server room; office block room can be transformed as medium- sized modular data center
- Medium-sizedlar data center can be set up on concrete floor directly, which can reduce extra auxiliary projects
- Support single row 300 mm airtight aisles setting, which can save server room floor space
- Support aisle lighting, server rack lighting, which can save electrical energy
- Supply cycle is short and quick installation,which can reduce cost effectively

WS SERIES Wall Mounted Cabinet



- Thickness Options:
WS: 1.5-1.0-0.8mm
WH: 1.5-1.2-1.0mm
WB: 1.0-0.6mm
- Color Options:
RAL9004(Black) and RAL7035(Grey)
- Front Door Options:
Glass/Mesh/Metal
- Accessories Options:
1 fan or 2 fans,wheels and leveling feet
PDU, shelf, cable manager, brush panel and earthing



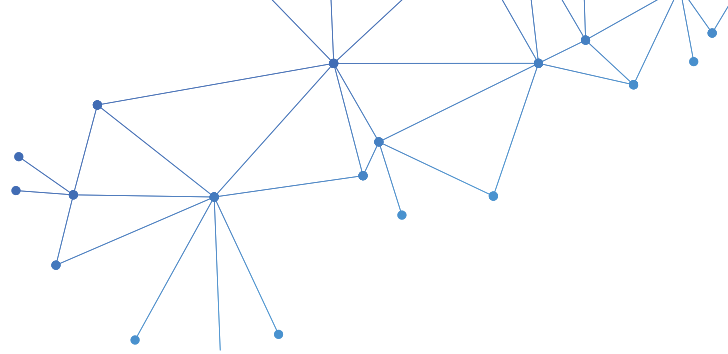
General Features

- ▣ Comply with ANSI/EIA RS-310-D, DIN41497 part 1, IEC297-2, DIN41494 part 7,GBIT3047.2-92 standard
- ▣ It has ability to assemble all kinds of electronic devices which are suitable of 19" standard
- ▣ Material: SPCC Cold Rolled Steel
- ▣ Surface Finish: Powder coating
- ▣ Knock-off holes for entering cable on top cover, bottom panel and rear panel
- ▣ Turning angle of front door is over 180 degrees
- ▣ The cabinets can be delivered as disassembled or assembled

Product Name	Product Series	Product Size (W*H)	Product Depth
CABCOMM 19" WALL MOUNT CABINET	WS6404	600*280	450
CABCOMM 19" WALL MOUNT CABINET	WS6406	600*368	450
CABCOMM 19" WALL MOUNT CABINET	WS6409	600*501	450
CABCOMM 19" WALL MOUNT CABINET	WS6412	600*635	450
CABCOMM 19" WALL MOUNT CABINET	WS6415	600*769	450
CABCOMM 19" WALL MOUNT CABINET	WS6418	600*901	450
CABCOMM 19" WALL MOUNT CABINET	WS6604	600*280	600
CABCOMM 19" WALL MOUNT CABINET	WS6606	600*368	600
CABCOMM 19" WALL MOUNT CABINET	WS6609	600*501	600
CABCOMM 19" WALL MOUNT CABINET	WS6612	600*635	600
CABCOMM 19" WALL MOUNT CABINET	WS6615	600*769	600
CABCOMM 19" WALL MOUNT CABINET	WS6618	600*901	600

WMG SERIES

Double Section Network Cabinet



- Thickness Options:
WMG: 1.5-1.0-0.8mm
- Color Options:
RAL9004(Black) and RAL7035(Grey)
- Front Door Options:
Glass/Mesh/Metal
- Accessories Options:
1 fan or 2 fans,wheels and castors
PDU,shelf,cable manager,brush panel and earthing

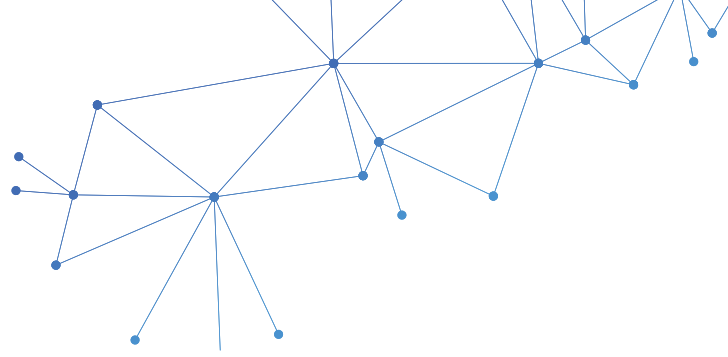
General Features

- ▣ Comply with ANSI/EIA RS-310-D, DIN41497 part 1, IEC297-2, DIN41494 part 7,GBIT3047.2-92 standard
- ▣ It has ability to assemble all kinds of electronic devices which are suitable of 19" standard
- ▣ Material: SPCC Cold Rolled Steel
- ▣ Surface Finish: Powder coating
- ▣ Knock-off holes for entering cable on top cover, bottom panel and rear panel
- ▣ Turning angle of front door and swing panel is over 180 degrees,
It is convenient to check the equipment from back side.
- ▣ The cabinets can be delivered as disassembled or assembled

Product Name	Product Series	Product Size (W*H)	Product Depth
CABCOMM 19" WALL MOUNT CABINET	WMG6404	600*280	450+100
CABCOMM 19" WALL MOUNT CABINET	WMG6406	600*368	450+100
CABCOMM 19" WALL MOUNT CABINET	WMG6409	600*501	450+100
CABCOMM 19" WALL MOUNT CABINET	WMG6412	600*635	450+100
CABCOMM 19" WALL MOUNT CABINET	WMG6415	600*769	450+100
CABCOMM 19" WALL MOUNT CABINET	WMG6418	600*901	450+100
CABCOMM 19" WALL MOUNT CABINET	WMG6604	600*280	500+100
CABCOMM 19" WALL MOUNT CABINET	WMG6606	600*368	500+100
CABCOMM 19" WALL MOUNT CABINET	WMG6609	600*501	500+100
CABCOMM 19" WALL MOUNT CABINET	WMG6612	600*635	500+100
CABCOMM 19" WALL MOUNT CABINET	WMG6615	600*769	500+100
CABCOMM 19" WALL MOUNT CABINET	WMG6618	600*901	500+100

W1/W4 SERIES

Economic Data Cabinet



W1 Series

General Features

- It has ability to assemble all kinds of electronic devices which are suitable of 19" standard
- Material: SPCC Cold Rolled Steel
- Size: 540*400mm
- Thickness Options: 1.0-0.6mm
- Color options: RAL9004(Black)/RAL7035(Grey)
- Front door options: Glass and metal
- Accessories options: fan, Shelf , PDU
- The cabinets can be delivered as disassembled or assembled

Product Name	Product Series	Product Size (W*H)	Product Depth
CABCOMM 19" WALL MOUNT CABINET	W15404	540*280	400
CABCOMM 19" WALL MOUNT CABINET	W15406	540*368	400
CABCOMM 19" WALL MOUNT CABINET	W15409	540*501	400



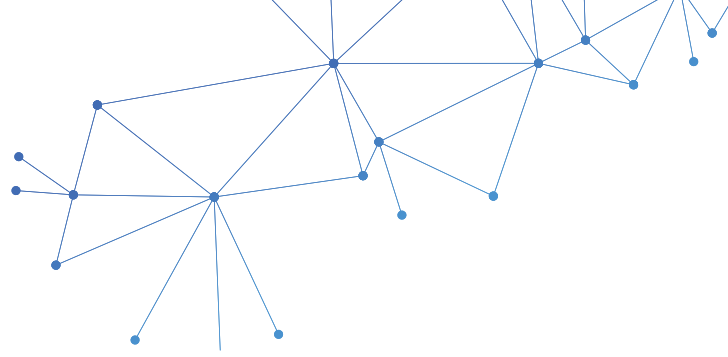
W4 Series

General Features

- It has ability to assemble all kinds of electronic devices which are suitable of 19" standard
- Material: SPCC Cold Rolled Steel
- Size: 540*400mm
- Thickness Options: 1.0-0.6mm
- Color options: RAL9004(Black)/RAL7035(Grey)
- Front door options: Glass and metal
- Accessories options: fan, Shelf , PDU
- Fully assembled

Product Name	Product Series	Product Size (H*W)	Product Depth
CABCOMM 19" WALL MOUNT CABINET	W45404	540*280	400
CABCOMM 19" WALL MOUNT CABINET	W45406	540*368	400
CABCOMM 19" WALL MOUNT CABINET	W45409	540*501	400

IP55-OUTDOOR Wall Mounted Cabinet



- Thickness Options:
Standard: 2.0-1.2mm
- Color Options:
RAL9004(Black) and RAL7035(Grey)
- Front Door Options:
Solid metal door
- Accessories Options:
1 fan or 2 fans, PDU, shelf, cable manager, brush panel and earthing
- Degree of protection:
IP55

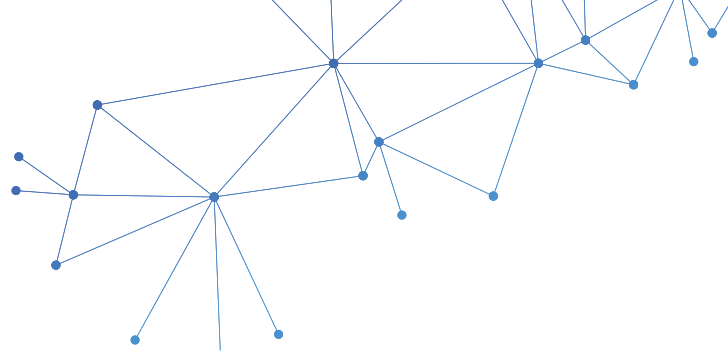


General Features

- ▣ Comply with ANSI/EIA RS-310-D, DIN41497 part 1, IEC297-2, DIN41494 part 7,GBIT3047.2-92 standard
- ▣ It has ability to assemble all kinds of electronic devices which are suitable of 19" standard
- ▣ Material: SPCC Cold Rolled Steel
- ▣ Surface Finish: Powder coating
- ▣ Turning angle of front door is over 180 degrees
- ▣ Fully assembled

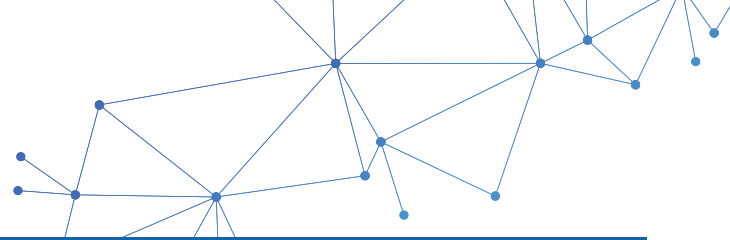
Product Name	Product Series	Product Size (W*H)	Product Depth
CABCOMM 19" WALL MOUNT CABINET	IP55-6404	600*280	400
CABCOMM 19" WALL MOUNT CABINET	IP55-6406	600*368	400
CABCOMM 19" WALL MOUNT CABINET	IP55-6409	600*501	400
CABCOMM 19" WALL MOUNT CABINET	IP55-6412	600*635	400
CABCOMM 19" WALL MOUNT CABINET	IP55-6415	600*769	400

FS SERIES 19 inch Network Cabinet

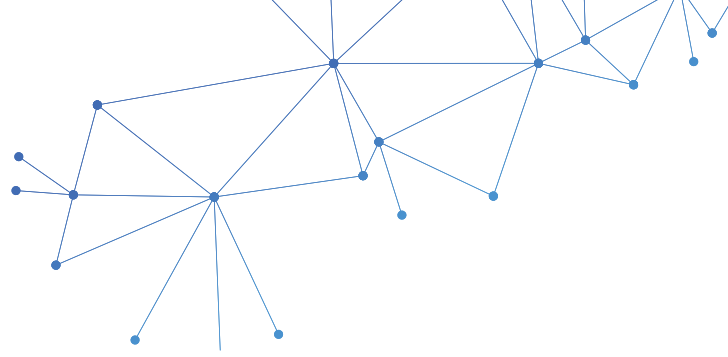


General Features

- Comply with ANSI/EIA RS-310-D, DIN41497 part 1, IEC297-2, DIN41494 part 7,GBIT3047.2-92 standard
 - Removable Side Panels
 - It has ability to assemble all kinds of electronic devices which are suitable of 19" standard
 - 2-fan,4-fan,6-fan modules have the ability to easily connect top of the product
 - Material: SPCC Cold Rolled Steel
 - Surface Finish:Powder coating
 - Knock-off holes for cable on both top cover and bottom panel
 - Turning angle of front door is over 180 degrees
 - The cabinets can be delivered as disassembled or assembled
- Thickness Options:
FS/FP Series: 2.0-1.2-1.0mm, F Series:2.0-1.5-1.2mm
F3 Series:1.5-1.0-0.8mm
 - Color Options:
RAL9004(Black) and RAL7035(Grey)
 - Front Door Options:
Glass/Mesh/Metal
 - Rear Door Options:
Mesh/Metal/Double mesh
 - Accessories Options:
Fans, PDU, shelf, cable manager and brush panel



Product Series	Product Capacity	Product Size (W*H)	Product Depth	Product Volume	Standard Accessories
	(U)	(mm)	(mm)	(CBM)	
FS.6618	18	600*987	600	0.131	2/4 fans and 1 shelf included
FS.6818		600*987	800	0.152	
FS.6018		600*987	1000	0.182	
FS.8818		800*987	800	0.212	
FS.8018		800*987	1000	0.240	
FS.6622	22	600*1164	600	0.146	
FS.6822		600*1164	800	0.169	
FS.6022		600*1164	1000	0.202	
FS.8822		800*1164	800	0.238	
FS.8022		800*1164	1000	0.267	
FS.6627	27	600*1387	600	0.166	
FS.6827		600*1387	800	0.189	
FS.6027		600*1387	1000	0.227	
FS.8827		800*1387	800	0.268	
FS.8027		800*1387	1000	0.299	
FS.6632	32	600*1609	600	0.186	
FS.6832		600*1609	800	0.211	
FS.6032		600*1609	1000	0.252	
FS.8832		800*1609	800	0.301	
FS.8032		800*1609	1000	0.333	
FS.6637	37	600*1832	600	0.229	
FS.6837		600*1832	800	0.265	
FS.6037		600*1832	1000	0.315	
FS.8837		800*1832	800	0.364	
FS.8037		800*1832	1000	0.405	
FS.6642	42	600*2054	600	0.248	
FS.6842		600*2054	800	0.285	
FS.6042		600*2054	1000	0.339	
FS.8842		800*2054	800	0.394	
FS.8042		800*2054	1000	0.437	
FS.6647	47	600*2276	600	0.291	
FS.6847		600*2276	800	0.339	
FS.6047		600*2276	1000	0.402	
FS.8847		800*2276	800	0.457	
FS.8047		800*2276	1000	0.509	

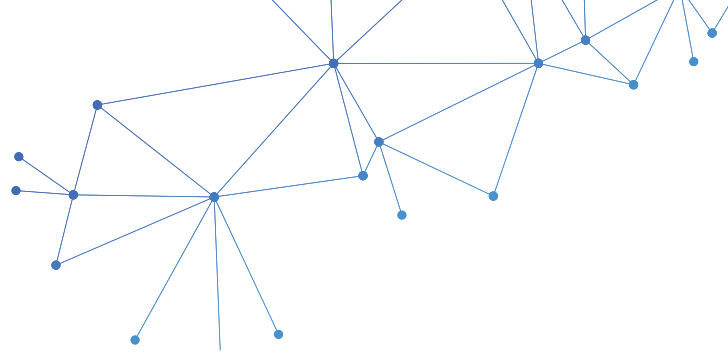


General Features

- Comply with ANSI/EIA RS-310-D, DIN41497 part 1, IEC297-2, DIN41494 part 7,GBIT3047.2-92 standard
 - Nine-fold section steel frame
 - It has ability to assemble all kinds of electronic devices which are suitable of 19" standard
 - 2-fan,4-fan,6-fan modules have the ability to easily connect top of the product
 - Material: SPCC Cold Rolled Steel
 - Surface Finish:Powder coating
 - Knock-off holes for cable on both top cover and bottom panel
 - Turning angle of front door is over 180 degrees
 - Fully Assembled
- Thickness Options:
2.0-1.5-1.2mm
 - Color Options:
RAL9004(Black) and RAL7035(Grey)
 - Front Door Options:
Single vented mesh
 - Rear Door Options:
Double vented mesh
 - Accessories Options:
Fans,PDU,shelf,cable manager,brush panel
 - Available sizes:
Height: 18U 22U 24U 27U 32U 37U 42U 47U
Width: 600mm/800mm
Depth: 600mm/800mm/1000mm/1200mm

H3 SERIES

Data Center Server Cabinet



General Features

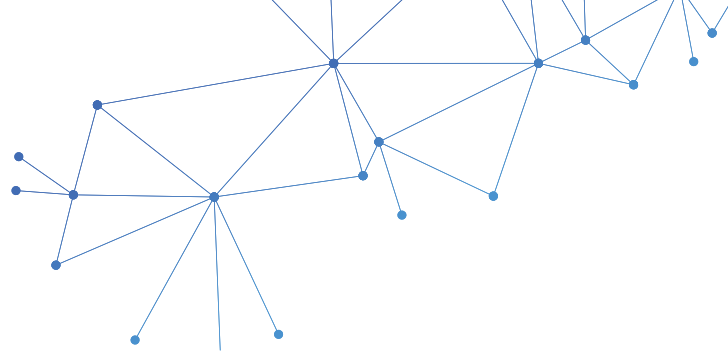
- Comply with ANSI/EIA RS-310-D, DIN41497 part 1, IEC297-2, DIN41494 part 7,GBIT3047.2-92 standard
- It has ability to assemble all kinds of electronic devices which are suitable of 19" standard
- 2-fan,4-fan,6-fan modules have the ability to easily connect top of the product;
- Material: SPCC Cold Rolled Steel
- Surface Finish:Powder coating
- Two section removable side panels
- Knock-off holes for entering cable on both top cover and bottom panel
- Turning angle of front door is over 180 degrees
- The cabinets can be delivered as disassembled or assembled

- Thickness Options:
2.0-1.5-1.2mm
- Color Options:
RAL9004(Black) and RAL7035(Grey)
- Front Door Options:
Single vented mesh
- Rear Door Options:
Double vented mesh
- Accessories Options:
Fans,PDU,shelf,cable manager,brush panel

Product Name	Product Capacity	Product Size (W*H)	Product Depth
CABCOMM H3-3100	42U	600*1947	1070
CABCOMM H3-3100		750*1947	

W-OR SERIES

Wall Mounted Open Rack



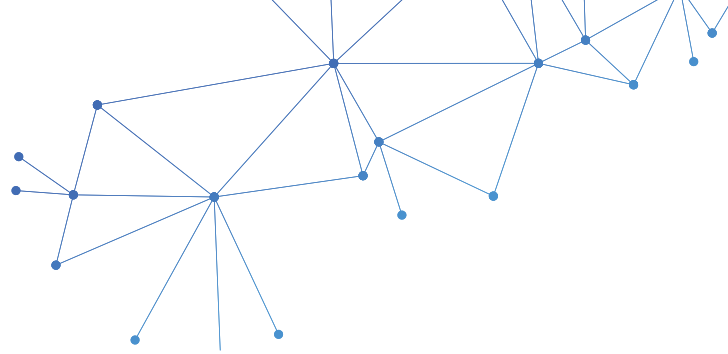
General Features

- Versatile: 4U,6U, 9U, 12U and 15U options allow you to scale to job requirements
 - Efficient: The open frame enables maximum airflow and easy overall access for installations and maintenance
 - Cable Management: The design incorporates cable management options such as rear slots for cable ties as well as holes for cable management rings
 - Durable: Constructed of heavy duty Cold Rolled Steel with double reinforced wall-anchor mounting holes to achieve the highest load capacity to support heavy A/V equipment, such as amplifiers
- Standard: Comply with ANSI/EIA RS-310-D, DIN41497 part 1, IEC297-2, DIN41494 part 7, GB/T3047.2-92 standard
 - Features: 19 inch width standard
Unassembled package saving shipping space
 - Material: SPCC Cold Rolled Steel
Surface Finish: Powder coating
 - Accessories Options: PDU,shelf,cable manager and patch panel

Product Name	Product Code	Product U	Product Depth
CABCOMM 19" WALL MOUNT OPEN RACK	WOR4U	4	400/600
CABCOMM 19" WALL MOUNT OPEN RACK	WOR6U	6	400/600
CABCOMM 19" WALL MOUNT OPEN RACK	WOR9U	9	400/600
CABCOMM 19" WALL MOUNT OPEN RACK	WOR12U	12	400/600
CABCOMM 19" WALL MOUNT OPEN RACK	WOR15U	15	400/600
CABCOMM 19" WALL MOUNT OPEN RACK	WOR18U	18	400/600

F-OR SERIES

2/4 Post Open Frame



- **Standard:**
Comply with ANSI/EIA RS-310-D, DIN41497 part 1, IEC297-2, DIN41494 part 7, GBIT3047.2-92 standard
- **Features:**
19 inch width standard
Unassembled package saving shipping space Shelf,PDU L-Rails are optional
- **Material:**
SPCC Cold Rolled Steel
Surface Finish: Powder coating

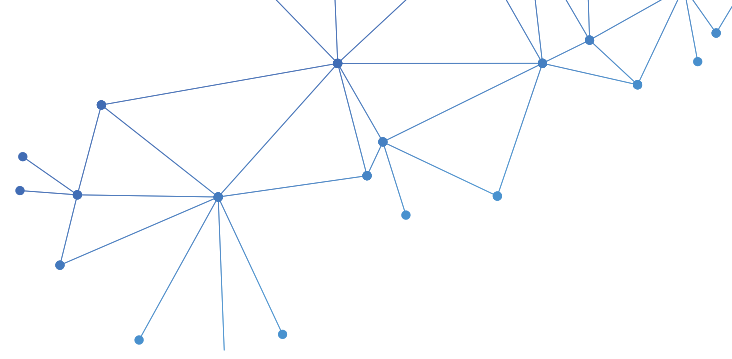
2-post Open Rack

Model No.	Capacity (U)	Width (mm)	Height (mm)
FOR218	18	600	987
FOR222	22	600	1165
FOR227	27	600	1387
FOR232	32	600	1610
FOR237	37	600	1831
FOR242	42	600	2053
FOR247	47	600	2276

4-post Open Rack

Model No.	Capacity (U)	Width (mm)	Height (mm)
FOR218	18	600	987
FOR222	22	600	1165
FOR227	27	600	1387
FOR232	32	600	1610
FOR237	37	600	1831
FOR242	42	600	2053
FOR247	47	600	2276

ACC SERIES 19" Shelf, Cable Manager



Shelves can be easily assembled into the cabinets for holding the equipment which are less than 19 inch standard



Fixed Shelf

The fixed shelf is perfect for supporting non-rack mountable IT equipment such as UPS's, battery backups, servers, routers, hubs, and more.



Cantilever Shelf

This cantilever shelf is perfect for supporting non-rack mountable equipment such as tower computers, satellite boxes, monitors, and UPS's.



Sliding Shelf

The Sliding Shelf is perfect for servers, keyboards, KVM's, switches, or any other component that you want the ability to slide out, either for convenience or to access the back of the equipment.



Keyboard Drawer

The Keyboard drawer is perfect for keyboards, KVM's, or any other component that you want the ability to slide out, either for convenience or to access the back of the equipment.



L Bracket

L bracket can be easily assembled into the cabinets for holding the equipment which are less than 19 inch standard, which can be instead of shelf.



Brush Panel

Brush panel is easy to install and suitable for various cables. Protecting the cabinet from dust inside.



Blank Panel

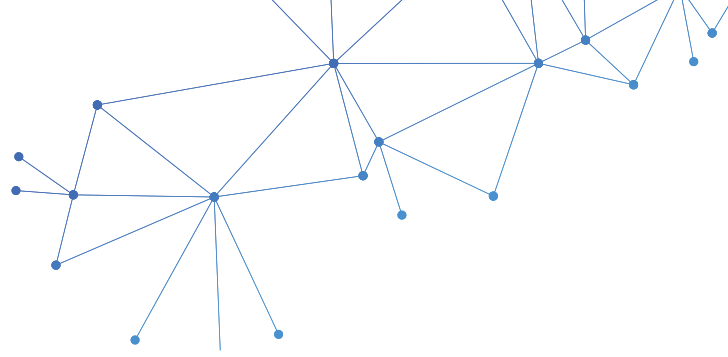
1U-4U Blank Panel not only makes racks look neat, clean, and organized, but when installed properly they provide added support to the mounting rails.



Cable Manager

The Cable Manager gives installers and network technicians a flexible and functional cable management bracket that will easily manage all types of cables.

ACC SERIES Fan, Lock, Wheel, Leveling Feet



Fan Assembly Kit helps to remove ambient heat that rackmount components can emit. Circulating new air into a wall mount cabinet or server enclosure helps to maintain the optimal temperature for devices such as servers, battery backups, and UPS's.



Single Fan



2-Fan Group



4-Fan Group



M6 Screws and Nut



Wheel with brake



Small Round Lock



Handle Lock

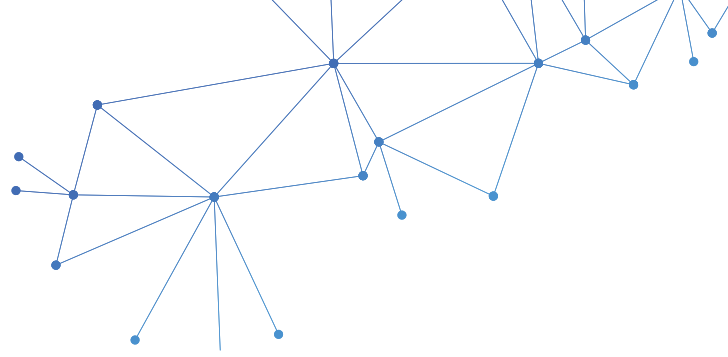


Grounding Wire



Leveling feet

ACC SERIES Patch Panel



Application:

Horizontal Distribution & Backbone Cabling

Material	
Panel	Cold rolled steel (thickness 1.5mm)
Back Bar	Cold rolled steel (thickness 1.5mm)
Housing	ABS
Spring Wire	Phosphor Bronze With Gold-plated 3u -50 u
IDC Contact	Phosphor Bronze
IDC Holder	High Impact PC

Mechanical Characteristics	
Current Rating	1.5 Amps
Insulation Resistance	500 Megaohm
DC Resistance	0.1 ohm MAX
Contact Resistance	20 Mili-ohm
IDC Contact	Phosphor Bronze
IDC Holder	High Impact PC
Voltage	150 VAC MAX
Temperature	— 60~80 °C
Humidity	10%-90% RH
IDC Accept	22-26 AWG Solid Wire



PN-UTP5E24



PN-UTP624



PN-UTP6A24



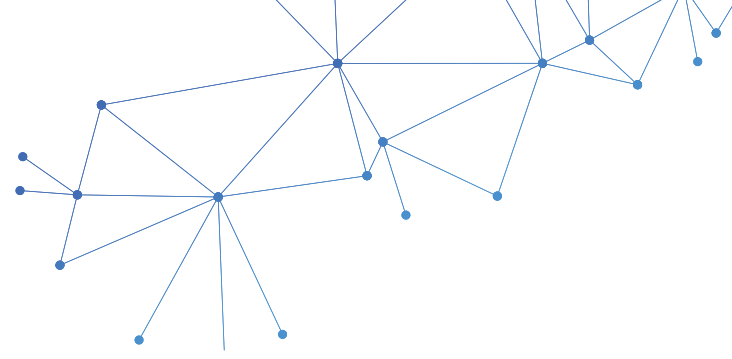
PN-FTP5E24



PN-FTP624



PN-FTP6A24



ACC SERIES

Power Distribution Unit

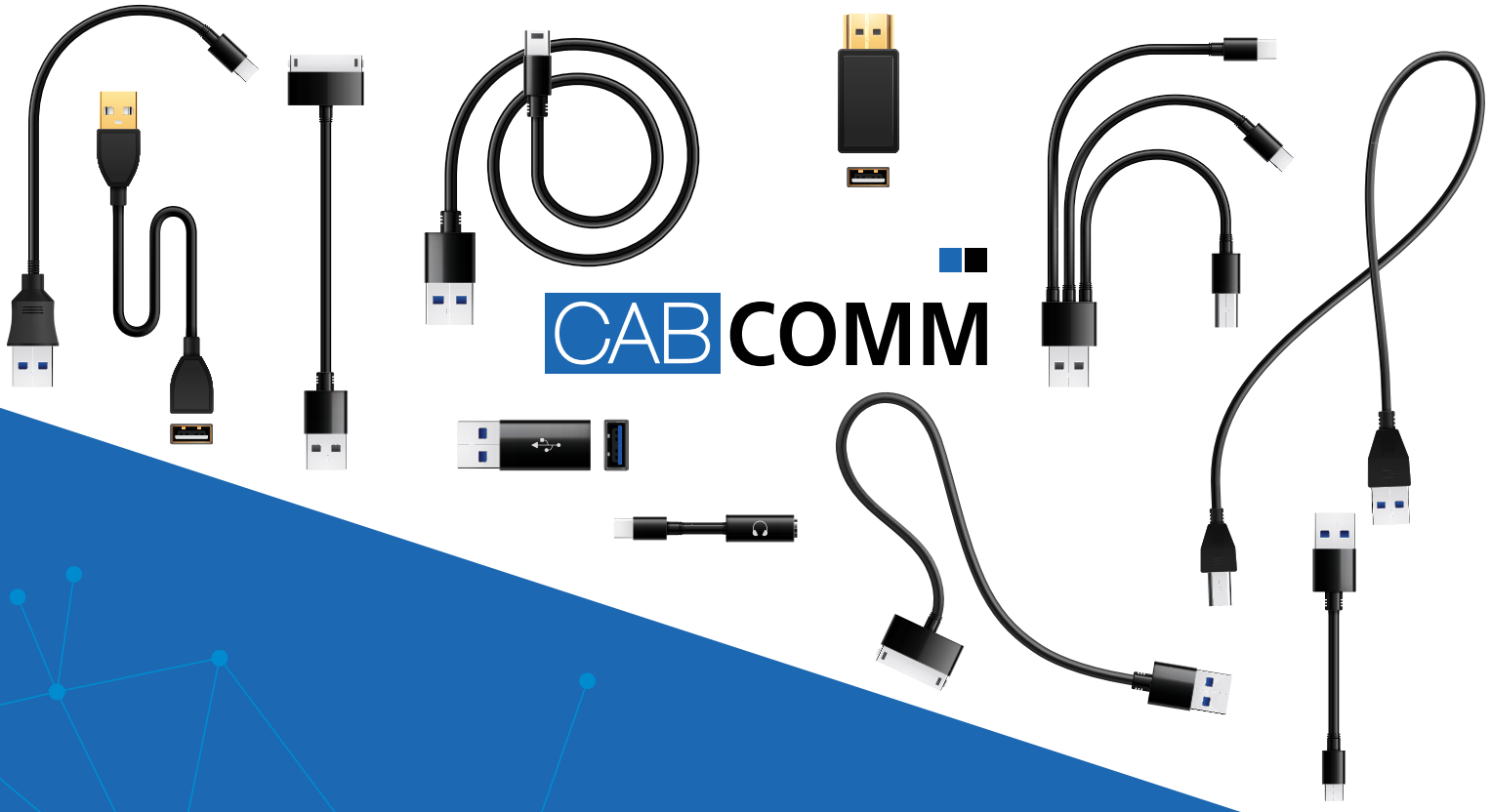
A power distribution unit (PDU) or is a device fitted with multiple outputs designed to distribute electric power, especially to racks of computers and networking equipment located within a data center.



ITEM	DETAILS DESCRIPTION			
	UK Standard	US Standard	EU Standard	Universal
Material	Aluminum alloy	Aluminum alloy	Aluminum alloy	Aluminum alloy
Color	Black	Black	Black	Black
Sockets	6/8/16ways	6/8/16ways	6/8/16ways	6/8/16ways
Product Size	6/8ways 1U 483 x 44 x 44 mm	6/8ways 1.5U 483 x 44 x 66 mm	6/8ways 1U 483 x 44 x 44 mm	6/8ways 1U 483 x 44 x 44 mm
	16ways 1U 865 x 44 x 44mm	16ways 1.5U 1000 x 44 x 66mm	16ways 1U 930 x 44 x 44mm	16ways 1U 865 x 44 x 44mm
Package Size	6ways 510 x 55 x 93mm	6ways 510 x 55 x 93mm	6ways 510 x 55 x 93mm	6ways 510 x 55 x 93mm
	16ways 984 x 55 x 102mm	16ways 1050 x 55 x 102mm	16ways 984 x 55 x 102mm	16ways 984 x 55 x 102mm
Weight	0.86kg	1.05kg	0.87kg	0.86kg (16wys1.3kg)
Install	Horizontal	Horizontal	Horizontal	Horizontal
Cable	VDE 3G*1.5 m ² *2m	VDE 3G*1.5 m ² *2m	VDE 3G*1.5 m ² *2m	VDE 3G*1.5 m ² *2m
Voltage/Frequency	110V, 50-60HZ	220-250V, 50-60HZ	220-250V, 50-60HZ	220-250V, 50-60HZ
Current	10A/16A	10A/16A	10A/16A	10A/16A
Max output power	3500W	3500W	3500W	3500W
Control indicating function	ON-OFF Switch Overload protection	ON-OFF Switch Overload protection (Except 8ways PDU)	ON-OFF Switch Overload protection	ON-OFF Switch Overload protection



CABCOMM SYSTEM
Distributor/ODM Are Welcome



CAB COMM



Contact US

India Office (HQ)
☎ PH: (+91) 9121938146
✉ info@cabcommsystem.com
🏠 A.K Enclave, 8-1-297/2/E/9
Shaikpet, Hyderabad-500008
Telangana, India

UK Office
☎ PH: (+966) 11 4221089
✉ info@cabcommsystem.com
🏠 275 New North Road, Islington Suite 1648,
London, N1 7AA, United Kingdom